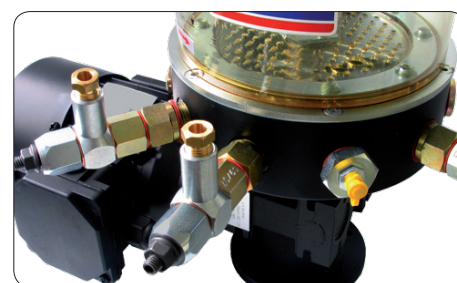
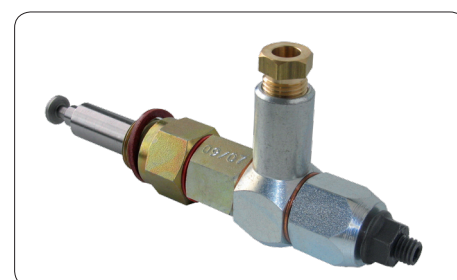


# Motor-driven pump unit GSJB

Multi-outlets pump units with oil or grease reservoir designed for centralized lubrication systems.



The motor-driven pump units GSJB have been especially designed for centralized lubrication system using disposable lubricants.

The multi-outlets pump units suit perfectly the industrial requirements. They can feed at the same time a great number of lubrication points under hard operation conditions or in a severe environment. They make it possible to feed directly several lubrication points (1 to 6), or progressive feeders and spray nozzles.

Different versions of the pump unit are available, according the capacity of the reservoir and the number of pump elements (to be ordered separately).

## Advantages

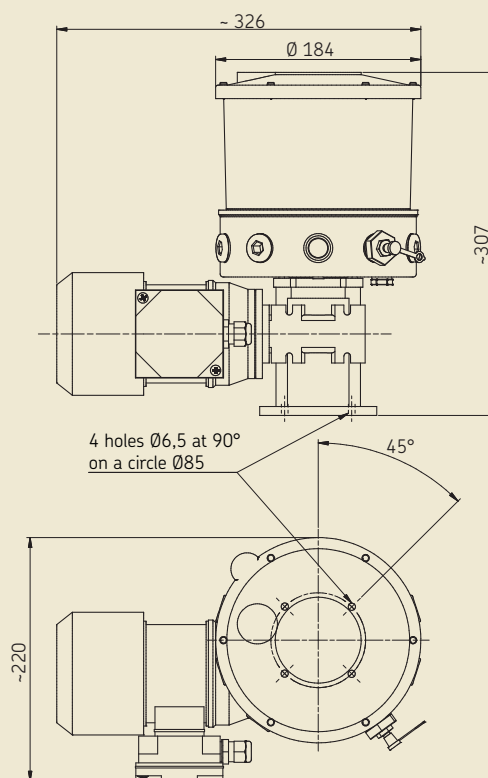
- Up to 6 pump elements
- Deliver lubricant directly to several lubrication points or to large-size progressive systems
- Security of the pump by means of the stirrer. It homogenizes the grease avoiding like this any air bubble in the lubricant. Thus the risk of unpriming is greatly reduced.
- Transparent reservoir, which makes the control of the grease easier.
- Possibility to add a minimal level switch to the pump.
- Operating pressure up to 150 bars.
- The pump unit function can be entirely automated by means of an electronic control unit.

## Motor-driven pump unit GSJB

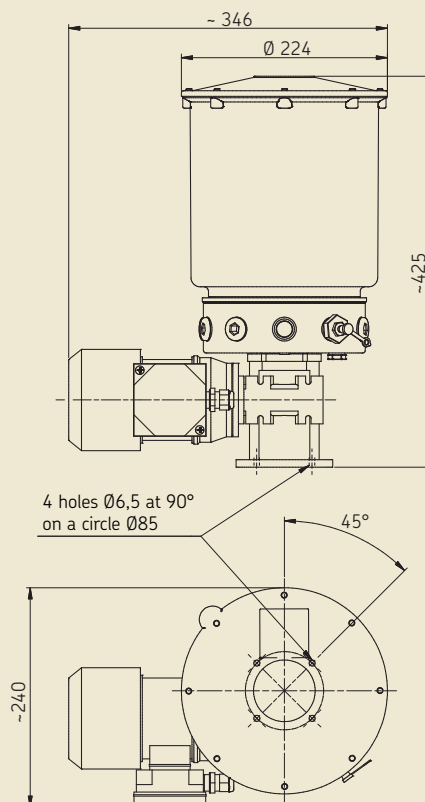
### Motor-driven pump GSJB0-... without level switch



GSJB0-2K



GSJB0-6K



See important product usage information on the back cover.  
See operating instruction 951-130-189.

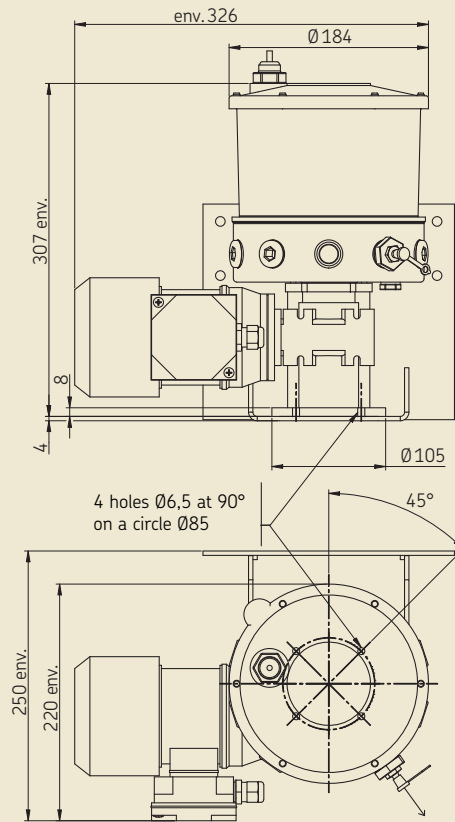
## Motor-driven pump unit GSJB

### Motor-driven pump GSJB0- with level switch for greases NLGI grade 000, 00, 0 and 1



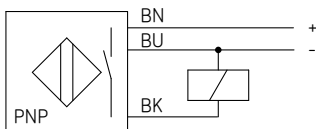
The level switch is an inductive proximity switch for greases and fluid greases. It is integrated to the cover of the reservoir.

GSJB0-2K1



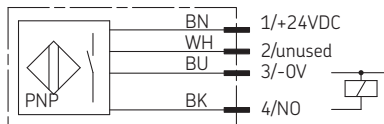
#### Level-switch, 2 kg reservoir

3-wire cable



#### Level-switch, 6 kg reservoir

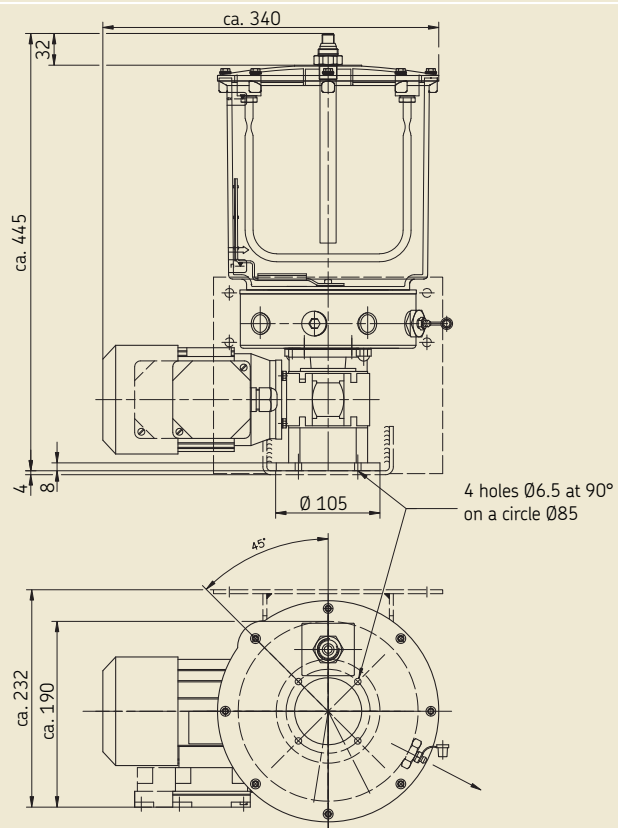
Round connector 4 poles



#### Caution!

The level switch used for the pumps GSJB0-\_K1... must not be used for greases NLGI grade 2.

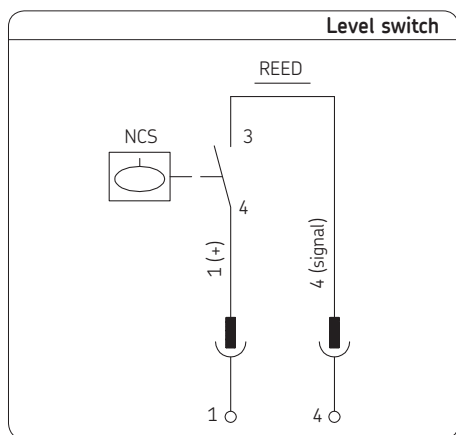
GSJB0-6K1



## Motor-driven pump GSJB0- with level switch for greases NLGI grade 2



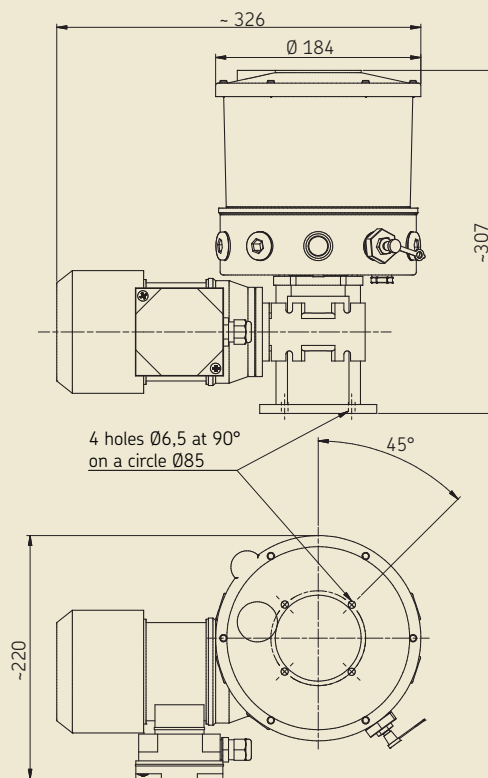
The level switch used here is designed as rocker switch and is integrated in the bottom of the reservoir. A magnetic rocker mounted on the agitator is turned downward by the grease resistance when the reservoir is full. Every time the agitator rotates a pulse is generated. When the minimum fill level is reached, the resistance the grease exerts on the rocker subsides and the rocker turns back. Therefore the pulse sequence is interrupted.



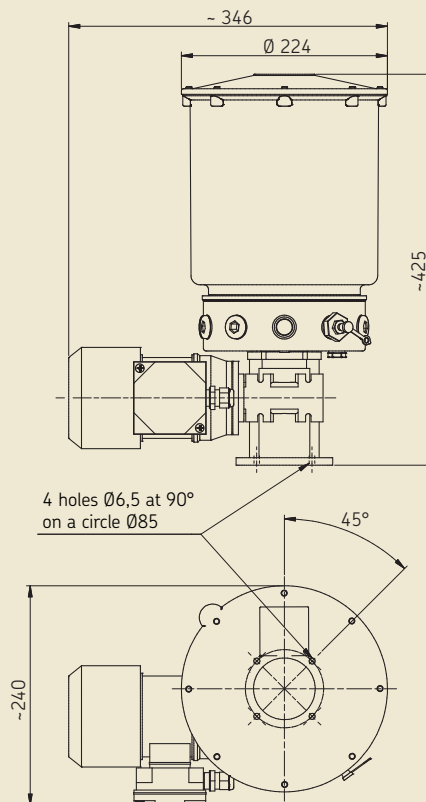
### Caution!

The level switch used for the pumps GSJB0-\_K5... must only be used for greases NLGI grade 2.

GSJB0-2K5



GSJB0-6K5



## Motor-driven pump unit GSJB

### Technical data

#### Motor-driven pump unit GSJB

Number of outlets	1 to 6
Flow rate per outlet	0,75 to 2,25 cm <sup>3</sup> /min
Pressure max.	150 bar
Service temperature	-10 to +40 °C
Lubricant	grease up to NLGI grade 2
Outlet connector, orientable	1/4 BSP
Filling	cone-shaped grease nipple DIN71412 drilling G 1/4

Material	
Housing	aluminum
Reservoir	polycarbonate
Weight	
Unit with reservoir 2 kg	7,8 kg
Unit with reservoir 6 kg	8,8 kg

#### Motor

Voltage <sup>1)</sup> and intensity	
1-phase	230 V ; 1,1 A
3-phase	230 / 400 V ; 0,59A / 0,34 A
Frequency	50 Hz / 60 Hz <sup>2)</sup>
Power	90 W
Rotation speed	1 500 min <sup>-1</sup>
Duty ratio	100%
Protection	IP 55
Class	F/vented

1) Low voltage directive 73/23/EEC – Norm EN 60439

2) At 60 Hz rotation speed is multiplied by 1,2

3) No inductive load, no lamp load (light signal)

#### Greases grades 000, 00, 0 and 1

Min. level switch	
Type	PNP NO the contact opens once the min. level has been reached
Voltage max.	10 to 30 V DC
Current	6 to 12 mA

#### Grease grade 2

Min. level switch	
Function	mechanical, potential free Reed switch
Type	NO
Voltage max.	24 V DC
Power max.	0,6 W
Current	25 mA, ohmic load only <sup>3)</sup>
Connection	DIN EN 60947/IEC 947
Connector	round M12x1

### Motor-driven pump unit GSJB<sup>1)</sup>

Order No.	Reservoir capacity [kg]	Grease, NLGI grade 000, 00, 0 and 1	2	Min. level	Power supply Single phase	three-phase	Voltage <sup>2)</sup> [V]	Frequency [Hz]
GSJB0-2K+428	2	•	•		•		230	50
GSJB0-2K+140	2	•	•			•	230/400	50
GSJB0-2K1+428	2	•		•	•		230	50
GSJB0-2K1+140	2	•		•		•	230/400	50
GSJB0-2K5+428	2		•	•	•		230	50
GSJB0-2K5+140	2		•	•		•	230/400	50
GSJB0-6K+428	6	•	•		•		230	50
GSJB0-6K+140	6	•	•			•	230/400	50
GSJB0-6K1+428	6	•		•	•		230	50
GSJB0-6K1+140	6	•		•		•	230/400	50
GSJB0-6K5+428	6		•	•	•		230	50
GSJB0-6K5+140	6		•	•		•	230/400	50

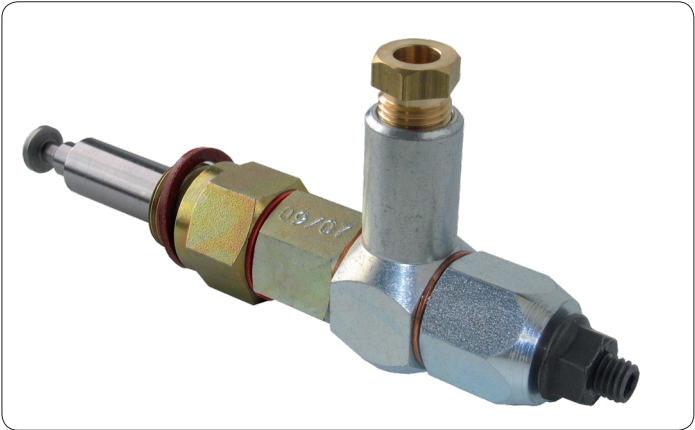
1) Pump elements for GJSB units have to be ordered separately

2) Other operating voltages on request

Pump elements

A motor-driven pump unit can have up to 6 pumping elements.

- Pumping element, piston Ø8, tube connection Ø6  
Order No. . . . . **GS100.8.6**
- Pumping element, piston Ø8, tube connection Ø8  
Order No. . . . . **GS100.8.8**



Accessories

Electric connectors

Electric connector, round, 4-pole type, for min. level switch

- Socket, straight, no cable, 0 to 30 V AC/DC 3A  
Order No. . . . . **179 990 371**

- Socket, angled, no cable, 0 to 30 V AC/DC 3A  
Order No. . . . . **179 990 372**

- Socket, straight, with cable 5 m, 10 to 30 V AC/DC 4A  
Order No. . . . . **179 990 600**

- Socket, angled, with cable 5 m, 10 to 30 V AC/DC 4A  
Order No. . . . . **179 990 601**

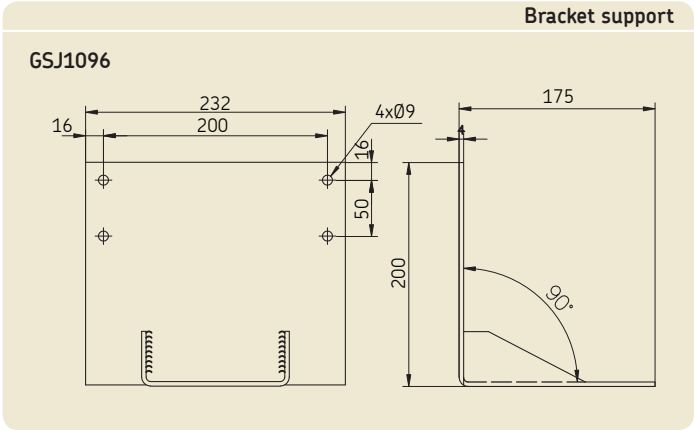
Relief valve

- Relief valve, set at 150 bars, connection G 1/4  
Order No. . . . . **HK030.150R**

- T connector, 3 × G 1/4 for tube Ø 8  
Order No. . . . . **NU308**

Bracket support

- Bracket support . . . . . Order No. **GSJ1096**



## Motor-driven pump unit GSJB

### Filling cylinder with filler socket

Filling cylinder complete . . . . . **169-000-171**

Filler socket (1) . . . . . **169-000-174**

Washer (2) . . . . . **DIN 7603-A20×24-AI**

Connecting piece for filler socket (3) . . . . . **853-950-010**

Banjo fitting to change the filling position (4) . . . . . **405-541-411**

### Filling device - quick-action coupling

Washer (1) . . . . . **DIN 7603-A14×18 CU**

Filler socket (2) . . . . . **995-000-705**

Coupling socket (3) . . . . . **995-001-500**

Hose fitting for connection to coupling socket

Diameter (d) 13 . . . . . **857-760-007**

Diameter (d) 16 . . . . . **857-870-002**

### Topping-up pump

Topping-up pump with an approx. delivery rate of 40 cm<sup>3</sup>/stroke

Pump with gear, for 25 kg drum

Order No. . . . . **169-000-042**

Pump with gear, for 50 kg drum

Order No. . . . . **169-000-054**

Pump without gear, for 25 kg drum

Order No. . . . . **169-000-705**

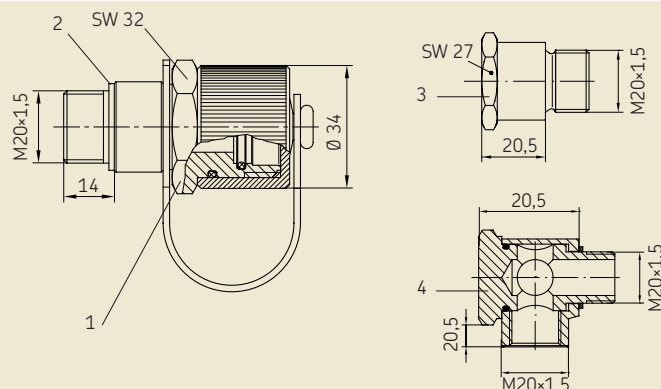
Corresponding filler socket

Order No. . . . . **995-000-705**

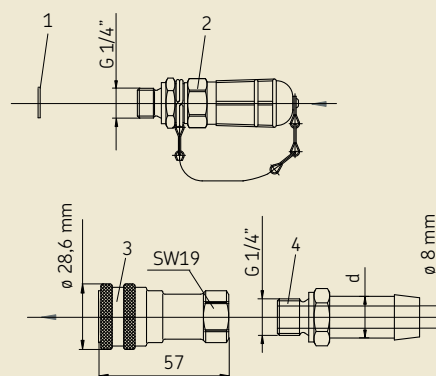
Filling cylinder



Filling cylinder/screw unions



Filling device - quick-action coupling



Topping-up pump



**Order No.: 1-4002-1-EN**

Subject to change without notice! (04/2009)

**Important product usage information**

All products from SKF may be used only for their intended purpose as described in this brochure and in any instructions. If operating instructions are supplied with the products, they must be read and followed.

Not all lubricants are suitable for use in centralized lubrication systems.

SKF does offer an inspection service to test customer supplied lubricant to determine if it can be used in a centralized system. SKF lubrication systems or their components are not approved for use with gases, liquefied gases, pressurized gases in solution and fluids with a vapor pressure exceeding normal atmospheric pressure (1013 mbars) by more than 0,5 bar at their maximum permissible temperature.

Hazardous materials of any kind, especially the materials classified as hazardous by European Community Directive EC 67/548/EEC, Article 2, Par. 2, may only be used to fill SKF centralized lubrication systems and components and delivered and/or distributed with the same after consulting with and receiving written approval from SKF.

**Further brochures:**

1-9201-EN Transport of Lubricants in Centralized Lubrication Systems

**SKF Lubrication Systems France SAS**

Rue Robert Amy, B.P. 70130

49404 Saumur cedex - France

Tel. +33 (0)2 241 404 200 • Fax +33 (0)2 241 404 242

[www.skf.com/lubrication](http://www.skf.com/lubrication)

This brochure was presented by:

® SKF is a registered trademark of the SKF Group.

© SKF Group 2009

The contents of this publication are the copyright of the publisher and may not be reproduced (even extracts) unless prior written permission is granted. Every care has been taken to ensure the accuracy of the information contained in this publication but no liability can be accepted for any loss or damage whether direct, indirect or consequential arising out of the use of the information contained herein.

